



NO IMAGE  
AVAILABLE

## M1R 660-11-K-Y 4,0M -1537

- without mounting flange
- Rubber enclosure
- soldering terminals and spade terminals
- Metal coating

## Data

### Ordering data

Product type description	M1R 660-11-K-Y 4,0M -1537
Article number (order number)	101083250
EAN (European Article Number)	4030661004303
eCl@ss number, version 12.0	27-27-06-01
eCl@ss number, version 11.0	27-27-06-01
eCl@ss number, version 9.0	27-27-06-01
ETIM number, version 7.0	EC000030
ETIM number, version 6.0	EC000030

### General data

Standards	EN IEC 60947-5-1
Gross weight	316 g

### General data - Features

Number of normally closed (NC)	1
Number of normally open (NO)	1

## Mechanical data

Mechanical life, minimum	3,000,000 Operations
Actuating speed, minimum	1 mm/min

## Mechanical data - Connection technique

Length of cable	4 m
Terminal designations	H05VV-F
Wire cross-section	0.75 mm <sup>2</sup>

## Ambient conditions

Degree of protection	IP65
Ambient temperature	-30 ... +80 °C

## Ambient conditions - Insulation values

Rated insulation voltage $U_i$	250 VAC
Rated impulse withstand voltage $U_{imp}$	4 kV

## Electrical data

Thermal test current	4 A
Utilisation category AC-15	230 VAC
Utilisation category AC-15	1 A
Switching principle	Snap action with self-cleaning contact
Maximum switching frequency	30,000 /h
Material of the contacts, electrical	Gold-plated silver (AgNi 15 + Au 0,3µm)

## Ordering code

Product type description:  
**M(1) 660(2)-11-k-y(3)**

(1)

---

<b>S</b>	rubber collar
<b>1S</b>	telescopic plunger
<b>2S</b>	telescopic plunger
<b>2R</b>	telescopic roller plunger

(2)

<b>without</b>	without mounting flange
<b>0</b>	with mounting flange (only for S)

(3)

<b>U</b>	With roller across switch axis (only for 2R)
----------	--

## Pictures

### Product picture (catalogue individual photo)



NO IMAGE  
AVAILABLE

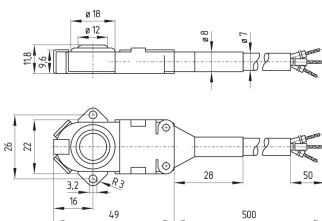
ID: no-pic01

| 98.4 kB | .jpg | 352.778 x 352.778 mm - 1000 x 1000 px - 72 dpi

| 3.3 kB | .png | 74.083 x 74.083 mm - 210 x 210 px - 72 dpi

| 26.4 kB | .jpg | 123.472 x 123.472 mm - 350 x 350 px - 72 dpi

### Dimensional drawing basic component



ID: Km660g02

| 123.5 kB | .jpg | 352.778 x 236.714 mm - 1000 x 671 px - 72 dpi

Schmersal Ltd., Sparrowhawk Close, WR14 1GL Malvern

The details and data referred to have been carefully checked. Images may diverge from original. Further technical data can be found in the manual. Technical amendments and errors possible.

Generated on: 25/06/2024, 12:45